

OBJECTS OF COMMON INTEREST/LOT PARTNERS FOR ARCHITECTURE VIP LOUNGE AT COLLECTIVE DESIGN FAIR

DESIGN

Highlights from the sixth annual edition of Collective Design

By TAMARA MOSCOWITZ | March 12, 2018

1
SHARE

[f SHARE](#) [TWEET](#) [P SHARE](#) [g+ SHARE](#)

In “a nod to the trend of cross-fertilization between artists, art, and design,” the Collective Design fair ran March 9-11, two months earlier than its usual May date, to coincide with Armory Week in New York, remarked Steven Learner, the Collective’s forward-thinking founder and creative director. “With the potential of increased attendance, we moved into a larger space at the Skylight Clarkson North, which also accommodated galleries presenting experiential installations.”

Here are the installations and objects that caught our eye:

Johanna Grawunder

CURRENT ISSUE



SUBSCRIBE
BACK ISSUES

E-NEWSLETTER

Enter your email address [SUBSCRIBE](#)

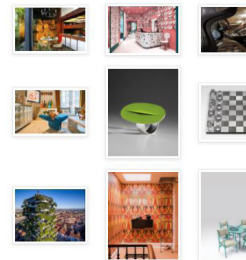
AGENDA

no event
[SEE MORE UPCOMING EVENTS](#)

INSTAGRAMS

by @modernmag

676 photos 4,689 followers



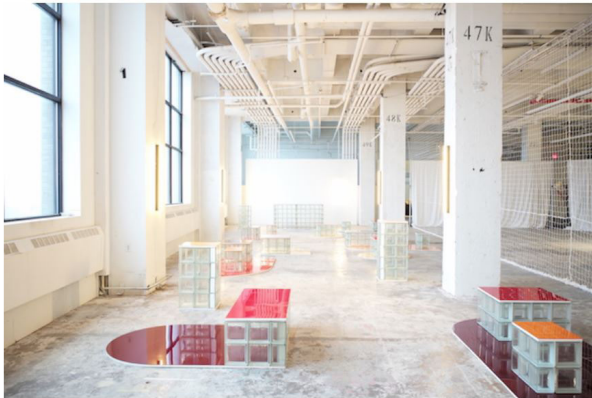
Powered by /CONOSQL



Johanna Grawunder Booth at Collective Design Fair. Courtesy of Carpenters Workshop Gallery.

Object Permanence, an installation by Johanna Grawunder, Milan-based Modernist designer and architect, and the Collective Influencer Honoree, showcased lighting and furniture from limited edition collections. Her latest work, *Gioster*, inspired in part by Mies van der Rohe's Barcelona Pavilion, is a small gem in colored Plexiglas and stainless steel illuminated by white LED. Grawunder is represented by Carpenters Workshop Gallery.

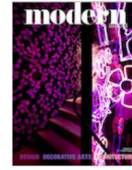
Objects of Common Interest/LOT Partners for Architecture



Objects of Common Interest/LOT Partners for Architecture. VIP lounge at Collective Design Fair. Courtesy of Carpenters Workshop Gallery.

The husband-and-wife team of Leonidas Trampoukis and Eleni Petaloti, founders and principals of architectural practice LOT, designed the light-filled VIP lounge. It featured seating arrangements in classical geometric blocks of custom glass, topped with colorful laminates scattered on earth-toned hard slabs. A white mesh curtain cordoned off the lounge, adding an ambience of transparency and stillness.

CURRENT ISSUE



SUBSCRIBE
BACK ISSUES

E-NEWSLETTER

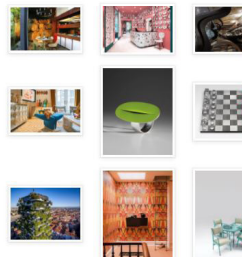
Enter your email address

AGENDA

no event
[SEE MORE UPCOMING EVENTS](#)

INSTAGRAMS by @modernmag

676 photos 4,689 followers



Powered by ICONOSQL